

H078

PRODUCT INFORMATION



DESCRIPTION:

TC, HONDA/ACURA, 97-UP, 4 CYL
114T RG GEAR, CODES: PEA/PCA/PAA

SPECIFICATIONS:

- Overall Diameter:** Mount ring: 10.86"
Bolt circle: 10.29"
- Ring Gear:** 114 tooth, .275" thick
- Mounting Holes:** (8) ea 6mm x 1.00 threads
- Overall Height:** 4.670"
- Pilot Diameter:** .945" diameter, .825" tall
- Turbine Splines:** 22
- Hub:** 1st land: 1.532" diameter
Splined -38 teeth
Flange width: 3.075"
Overall height : 1.665"
- ID Codes:** Large character ink stamp:
 - PEA/PCA/PAA
 Small character ink stamp:
 - 8b, c8c121a4
 Metal stamp: 'b' at hub flange

Note: slightly reduced primary



IMPORTANT NOTE:
The H078 is very similar to the H077. See the following two pages to properly ID different units.



EACH RECON™ BY TRANSTAR TORQUE CONVERTER IS COVERED BY THE INDUSTRY-LEADING 3-YEAR, 36,000-MILE WARRANTY!*

*Recon by Transtar Torque Converter Limited Warranty

HOW TO TELL THE DIFFERENCE BETWEEN THE H077 AND THE H078

There are two very similar late model Honda torque converters used primarily in 4-cylinder applications. The converters have the same height, hub, pilot, splines, bolt pattern, etc. Both converters even have the same (slightly) reduced primary. However, the position of the ring gears on the two converters is at relatively different locations on the units. Additionally, the ring gears have different thicknesses. **Interchanging these torque converters may result in damage to the vehicle starter and/or torque converter ring gear.**



Measuring the thickness of the ring gear



H077 has a 'narrow flange' at the impeller hub

The H077 has a flanged impeller hub. The flange (excluding the weld bead) is approximately 2.600" in diameter. The ring gear on this unit is approximately .355" thick.

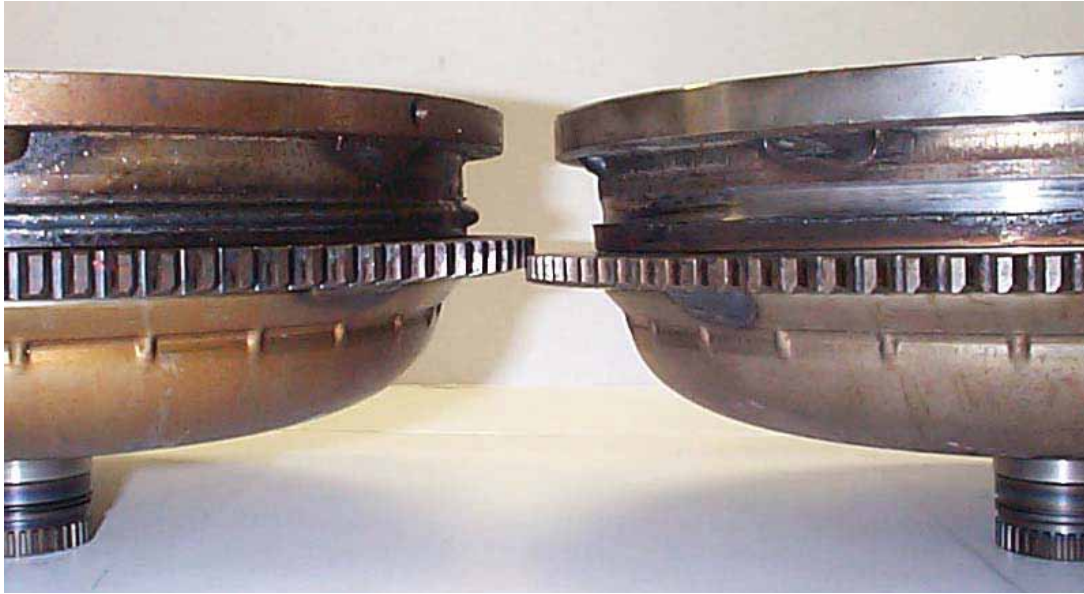


H078 has a 'wide flange' at the impeller hub

The H078 also has a flanged impeller hub. The flange on this converter is approximately 3.075" in diameter. The ring gear on this unit is approximately .275" thick.

H077

H078



Both ring gears on these units have 114 teeth. However, the position of the ring gear on the units is different, as shown above.

PART #	HUB FLANGE DIAMETER	RING GEAR THICKNESS
H077	Narrow - 2.600"	Thick - .355"
H078	Wide - 3.075"	Thin - .275"

NOTES:

- Honda torque converter codes can be confusing. Identical units can have a variety of different codes, while cases of the same codes on dimensionally different converters have been verified. Large character ink stampings (e.g., 'F4', 'P5M', '27N', etc.) seem to be the most consistent, while smaller characters and metal stampings are less consistent. Counting teeth on the ring gear can be a good method of eliminating part numbers from your search.